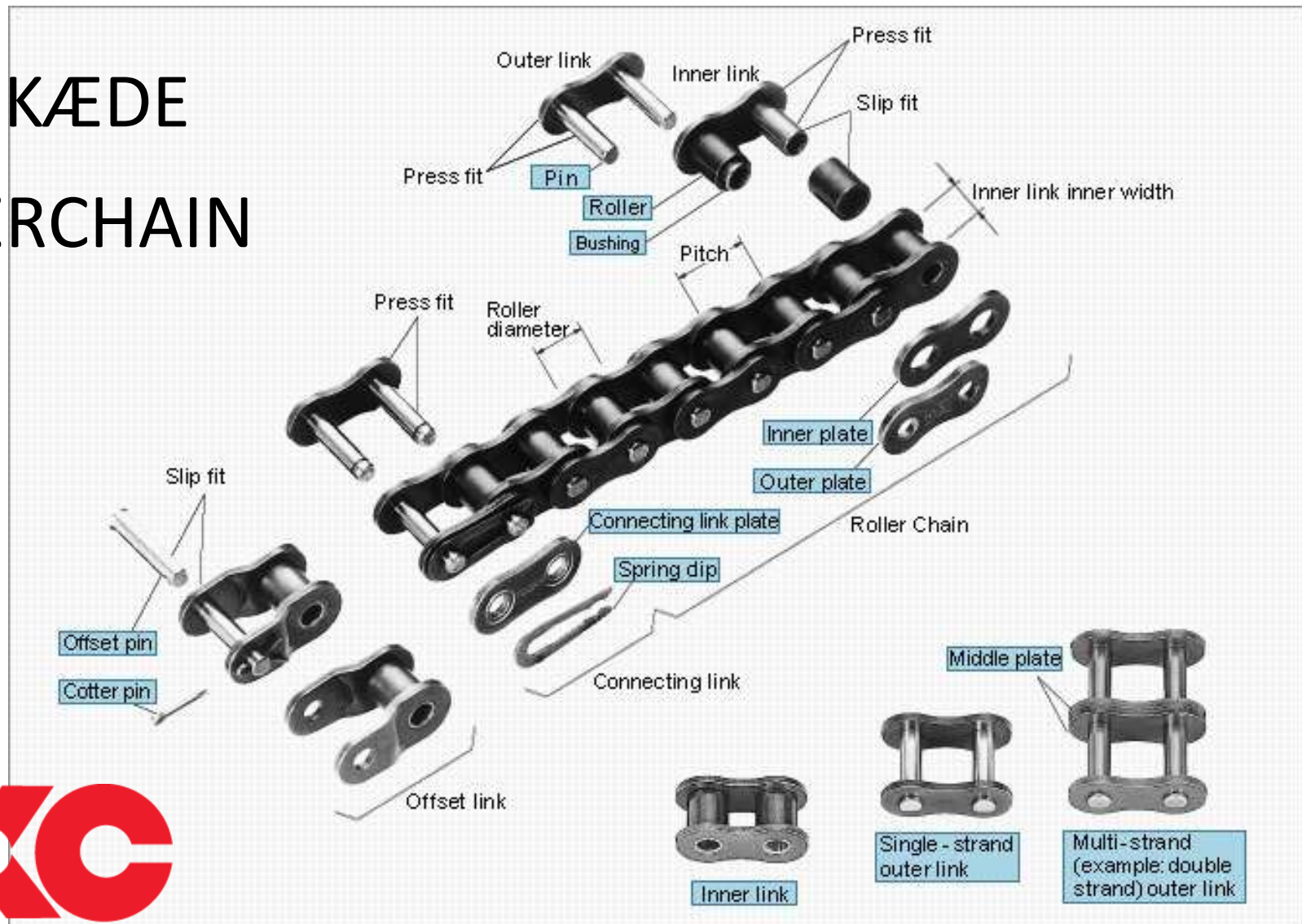


# RULLEKÆDE ROLLERCHAIN

British standard

American standard



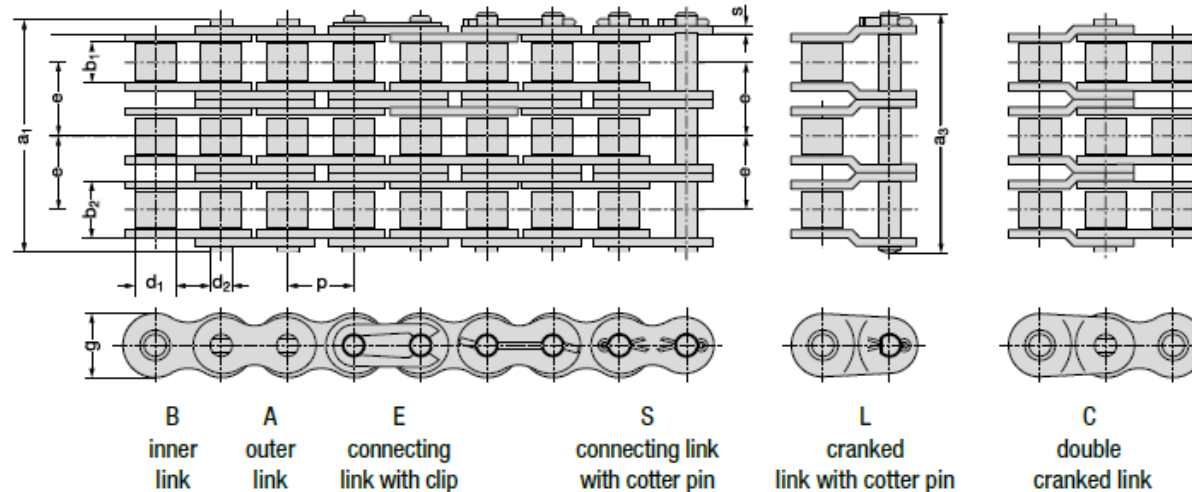
A/S DANSK KUGLELEJE CENTER

Tlf. 44 843 388 – [dkc@dkc-as.dk](mailto:dkc@dkc-as.dk)





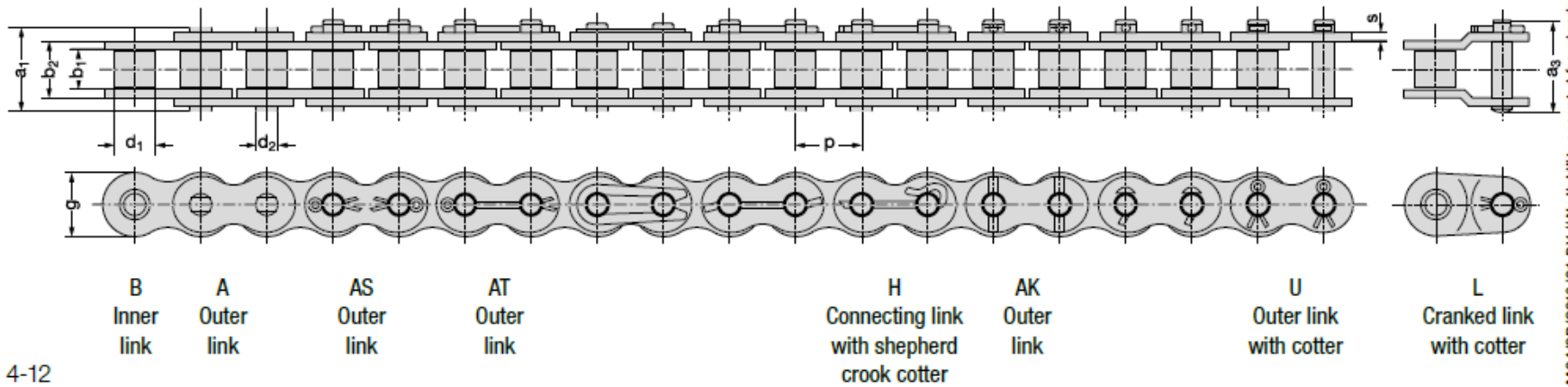
Chain - No.	Pitch p		Inner width	Roller Ø	Pin Ø	Inner link width	Link plate height	Median size	Pin length	Length of conn link pin	Bearing area	Required min. breaking strength DIN / ISO	Rexnord minimum breaking strength	Weight	Components						
	Inch	mm													b <sub>1</sub> min.	d <sub>1</sub> max.	d <sub>2</sub> max.	b <sub>2</sub> max.	g	e	a <sub>1</sub> max.
			mm	mm	mm	mm	mm	mm	mm	mm	mm	cm <sup>2</sup>	N	N	kg/m						
06 B - 3	0.375	9.52	5.72	6.35	3.28	8.53	8.3	10.24	34	37.3	0.84	24 900	26000	1.18			x	x	x		
08 B - 3	0.5	12.70	7.75	8.51	4.45	11.3	11.6	13.92	44.6	48.8	1.51	44 500	64000	2.1	x	x	x	x	x		
10 B - 3	0.625	15.87	9.65	10.16	5.08	13.28	14.6	16.59	52.2	56.9	2.02	66 700	75000	2.6	x	x	x	x	x		
12 B - 3	0.75	19.05	11.68	12.07	5.72	15.62	15.9	19.46	61.3	66.3	2.68	86 700	96000	3.4	x	x	x	x	x		
16 B - 3	1	25.40	17.02	15.88	8.28	25.4	20.5	31.88	99.3	105.3	6.31	160 000	210000	7.8	x	x	x	x	x		
20 B - 3	1.25	31.75	19.56	19.05	10.19	29	25.7	36.45	113.4	121.2	8.87	250 000	315000	10.85	x	x				x	x
24 B - 3	1.5	38.10	25.4	25.4	14.63	37.9	33	48.36	150.5	160.4	16.63	425 000	560000	20.5	x	x				x	x
28 B - 3	1.75	44.45	30.99	27.94	15.9	46.5	37	59.56	182.3	192.2	22.18	530 000	750000	25.75	x	x				x	x
32 B - 3	2	50.80	30.99	29.21	17.81	45.5	41.2	58.55	182.2	191	24.31	670 000	795000	27.95	x	x				x	x
40 B - 3	2.5	63.50	38.1	39.37	22.89	55.7	51.5	72.29	223.5	236.1	38.25	950 000	1170000	44.8	x	x				x	x
48 B - 3	3	76.20	45.72	48.26	29.24	70.5	63.5	91.21	281	306.5	61.84	1 500 000	1870000	72.5	x	x				x	x
56 B - 3	3.5	88.90	53.34	53.98	34.32	81.3	77	106.6	328	353.2	83.70	2 240 000	2850000	109	x	x					x
64 B - 3	4	101.60	60.96	63.5	39.4	92	93	119.89	368.2	379	108.75	3 000 000	3000000	144	x	x					x
72 B - 3	4.5	114.30	68.58	72.39	44.5	103.8	105	136.27	418.7	429.7	138.6	3 750 000	-	171	x	x					x



# Simplex roller chains, ISO 606 / DIN 8188

ASA type / American standard

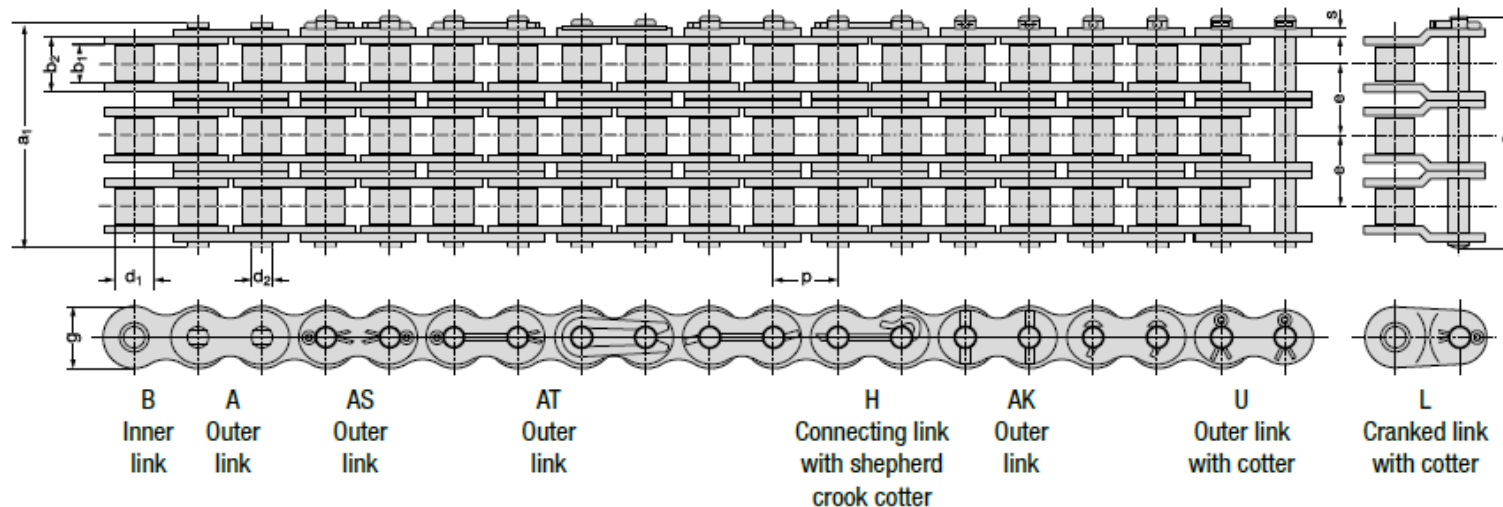
Chain - No.	Pitch p		Inner width		Roller $\varnothing$	Pin $\varnothing$	Inner link width	Link plate height	Median size	Pin length	Length of conn link pin	Bearing area	Required min. breaking strength DIN / ISO	Rexnord minimum breaking strength	Weight	Components									
			$b_1$ min.	$d_1$ max	$d_2$ max.	$b_2$ max	g	e	$a_1$ max.	$a_3$ max.	A	$F_B$	$F_B$	$\approx q$	A	AK	AS	AT	B	C	E	L	S	U	
	Inch	mm	mm	mm	mm	mm	mm	mm	mm	mm	mm	cm <sup>2</sup>	N	N	kg/m										
40 - 1	0.5	12.70	7.85	7.95	3.96	11.15	11.6	-	16.3	21.7	0.44	13 900	20 000	0.62					x	x	x	x			
50 - 1	0.625	15.87	9.4	10.16	5.08	13.8	14.6	-	20.3	25.9	0.7	21 800	30 000	1.01	x				x	x	x	x			
60 - 1	0.75	19.05	12.57	11.91	5.94	17.7	17.7	-	25.7	31.5	1.05	31 300	40 000	1.48	x				x	x	x	x	x		
80 - 1	1	25.40	15.75	15.88	7.92	22.5	23.5	-	33	38.9	1.78	55 600	65 000	2.6	x				x	x	x	x	x		
100 - 1	1.25	31.75	18.9	19.05	9.53	27.4	29.2	-	39.4	44.9	2.61	87 000	105 000	3.76	x				x			x	x		
120 - 1	1.5	38.10	25.22	22.23	11.1	35.3	34.4	-	49.8	56.1	3.92	125 000	145 000	5.5	x				x			x	x		
140 - 1	1.75	44.45	25.22	25.4	12.7	37	40.8	-	53.4	59.3	4.7	170 000	220 000	7.2	x	x		x	x			x		x	
160 - 1	2	50.80	31.55	28.58	14.27	45	47.8	-	63.6	68.9	6.42	223 000	260 000	10.3	x	x		x	x			x		x	
180 - 1	2.25	57.15	35.48	35.71	17.46	50.85	50	-	71.3	80	8.87	281 000	360 000	14	x	x		x	x			x		x	
200 - 1	2.5	63.50	37.85	39.68	19.84	54.7	60	-	78	87.5	10.85	347 000	400 000	16.8	x			x	x			x		x	
240 - 1	3	76.20	47.35	47.63	23.8	67.5	70	-	94.8	106.7	16.07	500 000	585 000	25	x		x		x			x		x	



MO4/GB/2013/01-DV // No liability accepted for misprints or errors!



Chain - No.	Pitch p		Inner width	Roller Ø	Pin Ø	Inner link width	Link plate height	Median size	Pin length	Length of conn link pin	Bearing area	Required min. breaking strength DIN/ISO	Rexnord minimum breaking strength	Weight	Components												
	Inch	mm													b <sub>1</sub> min.	d <sub>1</sub> max.	d <sub>2</sub> max.	b <sub>2</sub> max.	g	e	a <sub>1</sub> max.	a <sub>3</sub> max.	A	F <sub>B</sub>	F <sub>B</sub>	≈ q	A
			mm	mm	mm	mm	mm	mm	mm	mm	mm	cm <sup>2</sup>	N	N	kg/m												
40 - 3	0.5	12.70	7.85	7.95	3.96	11.15	11.6	14.48	45.1	50.6	1.32	41 700	60 000	1.83					x		x	x					
50 - 3	0.625	15.87	9.4	10.16	5.08	13.8	14.6	18.11	56.7	62.0	2.1	65 400	90 000	2.97	x				x		x	x					
60 - 3	0.75	19.05	12.57	11.91	5.94	17.7	17.7	22.78	71.4	77.2	3.15	93 900	120 000	4.35	x				x		x	x	x				
80 - 3	1	25.40	15.75	15.88	7.92	22.5	23.5	29.29	91.7	97.3	5.35	166 800	220 000	7.9	x				x			x	x				
100 - 3	1.25	31.75	18.9	19.05	9.53	27.4	29.2	35.76	111.1	117.2	7.83	261 000	300 000	11.4	x				x			x	x				
120 - 3	1.5	38.10	25.22	22.23	11.1	35.3	34.4	45.44	140.7	148.3	11.76	375 000	450 000	15.8	x				x				x	x			
140 - 3	1.75	44.45	25.22	25.4	12.7	37	40.8	48.87	151.2	158.5	14.1	510 000	660 000	21.5	x	x			x				x		x		
160 - 3	2	50.80	31.55	28.58	14.27	45	47.8	58.55	180.7	188.7	19.26	669 000	790 000	26.3	x	x			x				x		x		
180 - 3	2.25	57.15	35.48	35.71	17.46	50.85	50	65.84	202	210.7	26.61	843 000	1 020 000	40.5	x	x			x				x		x		
200 - 3	2.5	63.50	37.85	39.68	19.84	54.7	60	71.55	221.1	230.7	32.56	1 041 000	1 200 000	48.8	x			x	x				x		x		
240 - 3	3	76.20	47.35	47.63	23.8	67.5	70	87.83	270.6	282.5	48.2	1 500 000	1 930 000	74.1	x		x		x				x		x		





A/S Dansk Kugleleje Center, Mileparken 29, DK-2730 Herlev, Fax: 44 84 56 20

**Tlf. 44 84 33 88 – [dkc@dkc-as.dk](mailto:dkc@dkc-as.dk)**