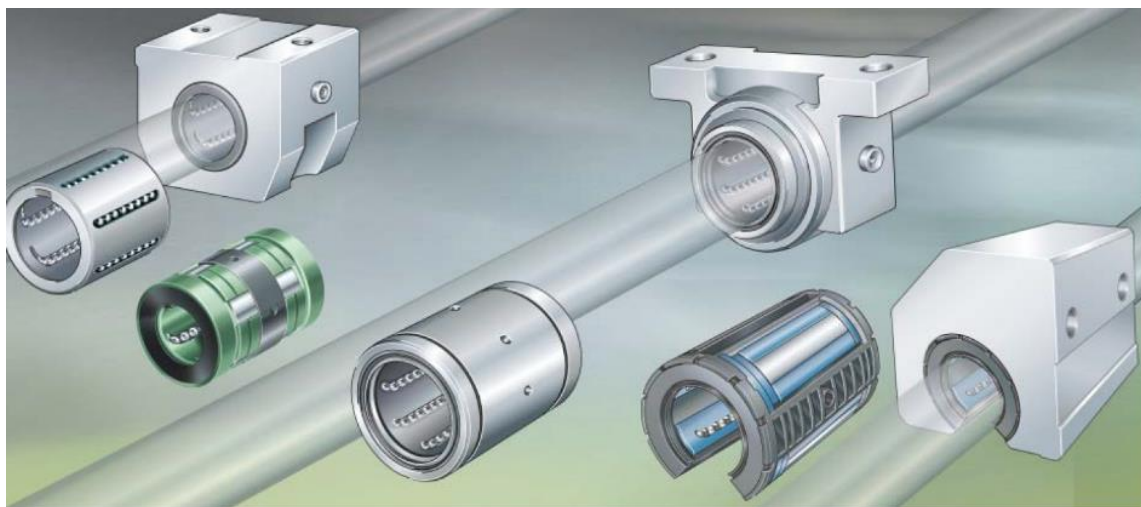


LINEAR KUGLEBØSNINGER HUSE AKSLER



DKC

A/S DANSK KUGLELEJE CENTER

Tlf. 44 843 388 – dkc@dkc-as.dk

Product overview **Linear bearings and linear bearing and housing units**

Compact range

Linear ball bearings
With and without seals

Features, see page 56

KH, KH...-PP



Closed units
Bearings in single or tandem arrangement

KGHK...-B-PP-AS



KTHK...-B-PP-AS



Closed unit

KGHA...-PP



Light range

Linear ball bearings
Closed or with segment cutout
With and without seals

Features, see page 58

KN...-B, KN...-B-PP



KNO...-B, KNO...-B-PP

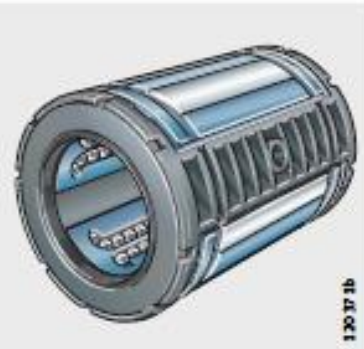


Heavy duty range

Linear ball bearings
Closed or with segment cutout
With and without seals

Features, see page 60

KS, KS...-PP



KSO, KSO...-PP

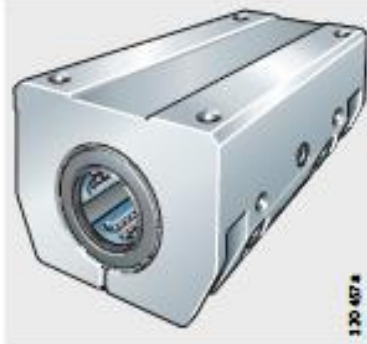


Closed units
Housing closed or slotted
Bearings in single or
tandem arrangement

KGSNG...-PP-AS,
KGSNS...-PP-AS

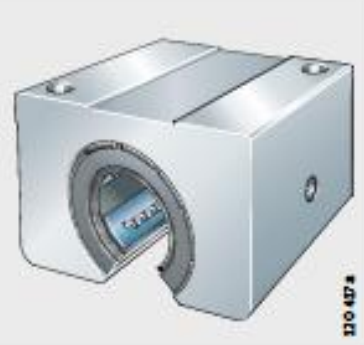


KTSG...-PP-AS,
KTSS...-PP-AS

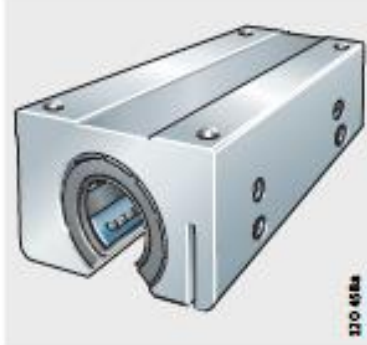


**Units
with segment cutout**
Housing not slotted or slotted
Bearings in single or
tandem arrangement

KGSNO...-PP-AS,
KGSNOS...-PP-AS

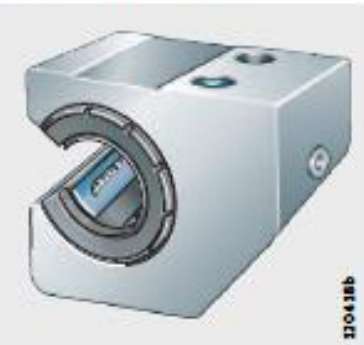


KTSO...-PP-AS,
KTSOS...-PP-AS

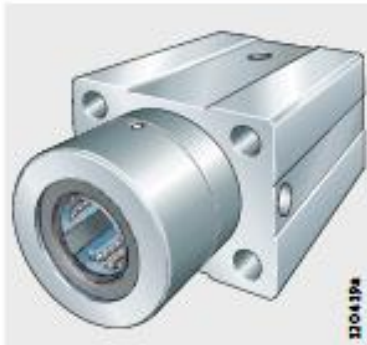


Bearings in single or
tandem arrangement
Housing not slotted or slotted
Unit with centring collar

KGSC...-PP-AS,
KGSCS...-PP-AS



KTFS



Product overview

Linear bearings and linear bearing and housing units

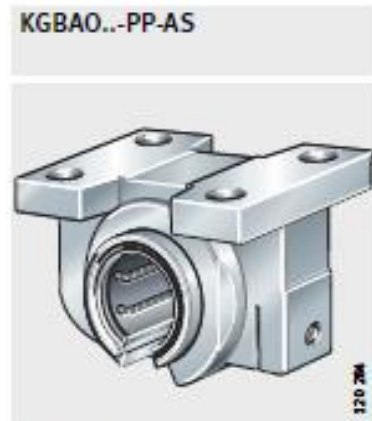
Machined range
 Linear ball bearings
 Closed or with slot
 With segment cutout
 With and without seals
 Features, see page 62



Closed units
 Housing closed or slotted



Units with segment cutout
 Housing not slotted or slotted

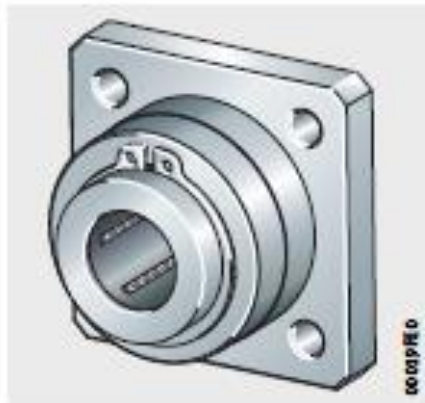


Closed units or units with segment output
 Bearings in tandem arrangement



Closed unit
Housing with flange

KFB...-B-PP-AS



Plain bearing range

Linear plain bearings
Closed or with segment cutout
Sealed

Features, see page 64

PAB...-PP-AS



PABO...-PP-AS

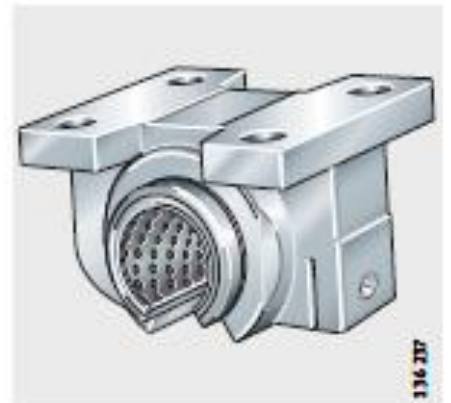


Linear plain bearing and
housing units
Closed or with segment cutout

PAGBA...-PP-AS



PAGBAO...-PP-AS

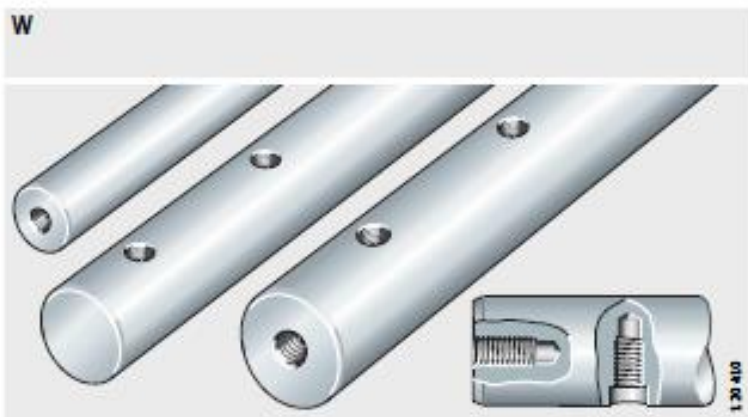


Product overview Solid shafts, hollow shafts

Solid shafts
Without threaded holes



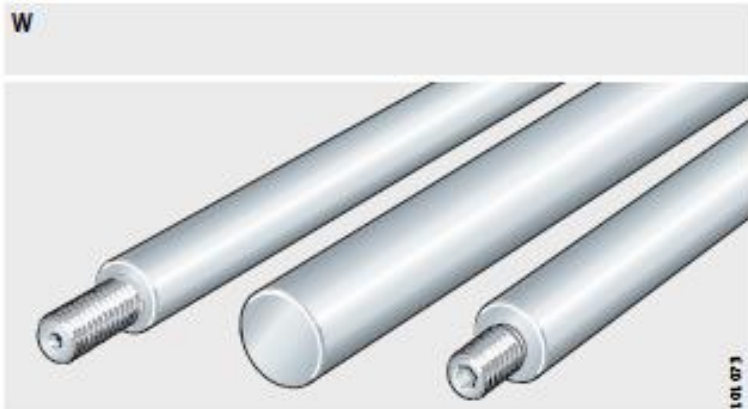
Axial and radial threaded holes



Hollow shafts



Shafts according to customer requirements



Product overview Shaft and support rail units

Shaft and support rail units

TSNW



TSWW



TSWWA



TSNW..-G4, TSNW..-G5



TSUW



TSSW



TSMW



Product overview Shaft support blocks

Shaft support blocks

GWH



GWN



GW, GWA



Shaft support block with flange

FW



Operating Temperature:

Bearings and housings can be used at operating temperatures from -30 °C to +80 °C.

Dynamic values for linear bearings

Acceleration, speed

Linear bearing series

KH KN-B KB KS PAB

Acceleration in m/s²

50 50 50 100 50

Speed in m/s

2 >5 >5 >5 >3

Suffix Description Design

PP Lip seals on both sides Standard

AS Bearing and unit with relubrication facility Standard

Steels, hardness, surface, tolerances, lengths

Shafts made from Cf53 are induction hardened and ground;
the surface hardness is 670 HV + 170 HV (59 HRC + 6 HRC).

Hollow shafts are only available made from quenched and tempered

Shafts made from corrosion-resistant steel to ISO 683-17 and EN 10 880

As an alternative to quenched and tempered steel, solid shafts are also available in corrosion-resistant steels, for example X46Cr13 (material number 1.4034), or X90CrMoV18 (material number 1.4112).

The surface hardness is 550 HV + 70 HV (54 HRC + 4 HRC).

These steels are particularly suitable for use in the foodstuffs industry, medical equipment and semiconductor technology. The suffix is X46 or X90.

Attention! Due to the hardness curve, the corrosion resistance of shafts made from the materials X46Cr13 and X90CrMoV18 is restricted at the end faces. This also applies to any soft-annealed areas.

Hardness, surface, tolerances, lengths

A uniform hardening depth will ensure a smooth transition from the hardened surface layer to the tough, normally annealed core, which can support bending stresses.

The standard surface is Ra0,3.

Solid shafts have the normal tolerance h6, while hollow shafts have h7.

High precision shafts are available in single piece lengths up to 6 000 mm. Longer shafts are available by agreement and are assembled (with mortice and tenon joints).

**Available materials,
coatings, tolerances**
Solid and hollow shafts

Shaft diameter	Solid shafts								Hollow shafts
	Material								
	Quenched and tempered steel					X46Cr13	X90CrMoV18	Quenched and tempered steel	
	Tolerance ⁵⁾			CR ¹⁾	RRF ²⁾ KD ³⁾ KDC ⁴⁾			Tolerance	
mm	h6	j5	f7	h7	h7	h6	h6	h7	
4	●	-	-	-	■	●	●	-	
5	●	-	-	-	■	-	-	-	
6	●	-	-	●	■	●	●	-	
8	●	-	-	●	■	●	●	-	
10	●	-	-	●	■	●	●	-	
12	●	-	-	●	■	●	●	-	
14	●	-	-	●	■	●	●	-	
15	●	-	●	●	■	●	●	-	
16	●	●	●	●	■	●	●	-	
18	●	-	●	●	■	●	●	-	
20	●	●	●	●	■	●	●	●	
24	●	-	-	-	■	●	●	-	
25	●	●	●	●	■	●	●	●	
30	●	●	●	●	■	●	●	●	
32	●	●	●	-	■	●	●	-	
40	●	●	-	●	■	●	●	●	
50	●	●	-	●	■	●	●	●	
60	●	-	-	●	■	●	●	●	
80	●	-	-	●	■	●	●	●	

- Available by agreement.
- Available design.

KH Linear ball bearing, compact range
 KGHA..-PP Linear ball bearing and housing unit, compact range,
 closed, sealed
 KGHK..-B-PP-AS Linear ball bearing and housing unit, compact range,
 closed, sealed, relubrication facility.....
 KGHV..-PP Linear ball bearing and housing unit, compact range,
 sheet steel housing, with Corrotect® coating, sealed.....
 KGHWT..-PP Linear ball bearing and housing unit, compact range,
 sheet steel housing, with Corrotect® coating, sealed.....
 KTHK..-B-PP-AS Linear ball bearing and housing unit, compact range,
 closed, bearings in tandem arrangement,
 sealed, relubrication facility.....
 KN..-B Linear ball bearing, light range,
 closed, self-aligning
 KNO..-B Linear ball bearing, light range,
 segment cutout, self-aligning.....
 KGN..-C-PP-AS Linear ball bearing and housing unit, light range,
 closed, sealed, relubrication facility.....
 KGNC..-C-PP-AS Linear ball bearing and housing unit, light range,
 segment cutout, sealed, relubrication facility.....
 KGNCs..-C-PP-AS Linear ball bearing and housing unit, light range,
 slotted housing, segment cutout
 sealed, relubrication facility.....
 KGNO..-C-PP-AS Linear ball bearing and housing unit, light range,
 segment cutout, sealed, relubrication facility.....
 KGNOS..-C-PP-AS Linear ball bearing and housing unit, light range,
 slotted housing, segment cutout,
 sealed, relubrication facility.....
 KGNS..-C-PP-AS Linear ball bearing and housing unit, light range,
 closed, slotted housing, sealed,
 relubrication facility.....
 KTFN..-C-PP-AS Linear ball bearing and housing unit, light range,
 closed, bearings in tandem arrangement,
 with centring flange, sealed, relubrication facility
 KTN..-C-PP-AS Linear ball bearing and housing unit, light range,
 closed, bearings in tandem arrangement,
 sealed, relubrication facility.....
 KTNO..-C-PP-AS Linear ball bearing and housing unit, light range,
 bearings in tandem arrangement, segment cutout,
 sealed, relubrication facility.....
 KTNOS..-C-PP-AS Linear ball bearing and housing unit, light range,
 bearings in tandem arrangement, segment cutout,
 slotted housing, sealed, relubrication facility.....
 KTNS..-C-PP-AS Linear ball bearing and housing unit, light range,
 closed, bearings in tandem arrangement,
 slotted housing, sealed, relubrication facility.....
 KS Linear ball bearing, heavy duty range,
 closed, self-aligning
 KSO Linear ball bearing, heavy duty range,
 segment cutout, self-aligning
 KGSC..-PP-AS Linear ball bearing and housing unit, heavy duty range,
 segment cutout, sealed, relubrication facility
 KGSCS..-PP-AS Linear ball bearing and housing unit, heavy duty
 range,
 segment cutout, slotted housing,
 sealed, relubrication facility
 KGSNG..-PP-AS Linear ball bearing and housing unit, heavy duty
 range,
 closed, sealed, relubrication facility
 KGSNO..-PP-AS Linear ball bearing and housing unit, heavy duty
 range,
 segment cutout, sealed, relubrication facility
 KGSNOS..-PP-AS Linear ball bearing and housing unit, heavy duty
 range,
 segment cutout, slotted housing,
 sealed, relubrication facility
 KGSNS..-PP-AS Linear ball bearing and housing unit, heavy duty
 range,
 slotted housing, sealed, relubrication facility
 KTFS Linear ball bearing and housing unit, heavy duty range,
 closed, bearings in tandem arrangement,
 with centring flange, sealed, relubrication facility
 KTSG..-PP-AS Linear ball bearing and housing unit, heavy duty range,
 closed, bearings in tandem arrangement,
 sealed, relubrication facility
 KTSO..-PP-AS Linear ball bearing and housing unit, heavy duty range,
 bearings in tandem arrangement, segment cutout,
 sealed, relubrication facility
 KTSOS..-PP-AS Linear ball bearing and housing unit, heavy duty
 range,
 bearings in tandem arrangement, segment cutout,
 slotted housing, sealed, relubrication facility
 KTSS..-PP-AS Linear ball bearing and housing unit, heavy duty range,
 closed, bearings in tandem arrangement,
 slotted housing, sealed, relubrication facility
 KB Linear ball bearing, machined range, closed.....
 KBO Linear ball bearing, machined range,
 closed, segment cutout
 KBS Linear ball bearing, machined range, slotted
 KFB..-PP-AS Linear ball bearing and housing unit, machined range,
 closed, with flange, sealed, relubrication facility.....
 KGB..-PP-AS Linear ball bearing and housing unit, machined range,
 closed, sealed, relubrication facility.....
 KGBA..-PP-AS Linear ball bearing and housing unit, machined range,
 closed, sealed, relubrication facility.....
 KGBAO..-PP-AS Linear ball bearing and housing unit, machined range,
 segment cutout, sealed, relubrication facility.....
 KGBAS..-PP-AS Linear ball bearing and housing unit, machined range,
 slotted housing, sealed, relubrication facility.....
 KGBO..-PP-AS Linear ball bearing and housing unit, machined range,
 segment cutout, sealed, relubrication facility.....
 KGBS..-PP-AS Linear ball bearing and housing unit, machined range,
 slotted housing, sealed, relubrication facility.....
 KTB..-PP-AS Linear ball bearing and housing unit, machined range,
 closed, bearings in tandem arrangement,
 sealed, relubrication facility.....
 KTBO..-PP-AS Linear ball bearing and housing unit, machined range,
 segment cutout, bearings in tandem arrangement,
 sealed, relubrication facility.....
 PAB..-PP-AS Linear plain bearing, Permaglide® plain bearing range,
 closed, sealed, relubrication facility
 PABO..-PP-AS Linear plain bearing, Permaglide® plain bearing range,
 segment cutout, sealed, relubrication facility
 PAGBA..-PP-AS Linear plain bearing unit, Permaglide® plain bearing
 range,
 closed, sealed, relubrication facility
 PAGBAO..-PP-AS Linear plain bearing unit, Permaglide® plain bearing
 range,
 segment cutout, sealed, relubrication facility
 W Solid shafts
 WH Hollow shafts
 TSMW Shaft and support rail unit,
 support rail with high bending rigidity
 TSNW Shaft and support rail unit for fixing from above
 TSNW..-G4 Shaft and support rail unit for fixing from above
 TSNW..-G5 Shaft and support rail unit for fixing from above
 TSSW Shaft and support rail unit for fixing from side
 TSUW Shaft and support rail unit for fixing from below
 TSVW Shaft and support rail unit for fixing from above
 TSVWA Shaft and support rail unit for fixing from above
 FW Shaft support block with flange
 GW Shaft support block
 GWA Shaft support block
 GWH Shaft support block
 GWN Shaft support block



A/S Dansk Kugleleje Center / DKC * Mileparken 29 * DK-2730 Herlev
www.danskkuglelejecenter.dk * dkc@dkc-as.dk * invoice@dkc-as.dk

CVR(VAT): DK1175914
Telefon: (+45) 4484 3388